

Medical “tubing misconnections continue to cause severe patient injury and death, since tubes with different functions can easily be connected using Luer connectors, or connections can be “rigged” (constructed) using adapters, tubing or catheters”*.

The International Organization for Standardization (ISO) has developed the ISO 80369 series, illustrated below, of small-bore medical connector standards to improve patient safety**. These standards create unique tubing connectors for each bodily system that are mechanically incompatible outside of their therapeutic area. This reduces the risks of harmful and even fatal misconnections, where medical tubing inadvertently connects one bodily system to another. These therapy specific, ISO standardized systems, that increase patient safety are described below. To learn more about these patient safety initiatives, visit www.stayconnected.org.

ISO 80369 Series

80369-7,
Vascular/Intravenous
Published 2016

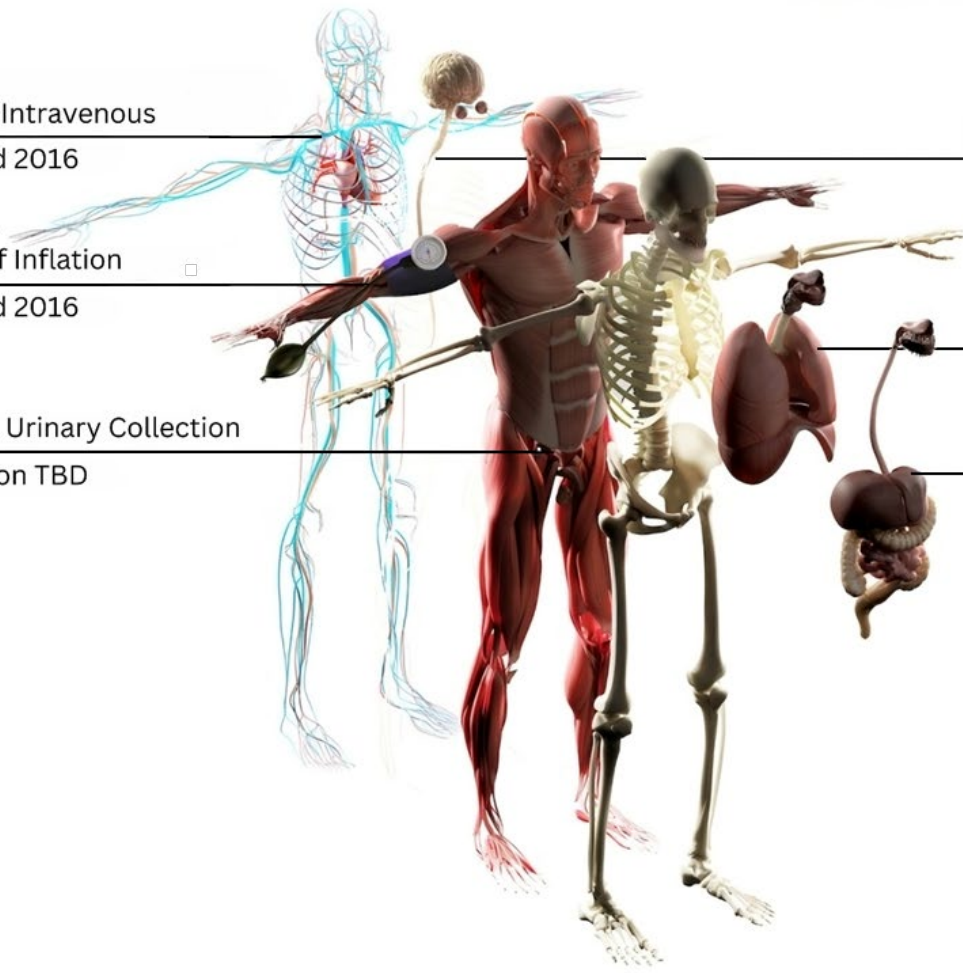
80369-5,
Limb Cuff Inflation
Published 2016

80369-4, Urinary Collection
Publication TBD

80369-6, Neuraxial
Published 2016

80369-2, Respiratory
Published 2016

80369-3, Enteral
Published 2016



*<https://ow.ly/ROQx50QfKca>

**<https://ow.ly/eMs250QfKc7> & <https://ow.ly/iE0Q50QfKc9>