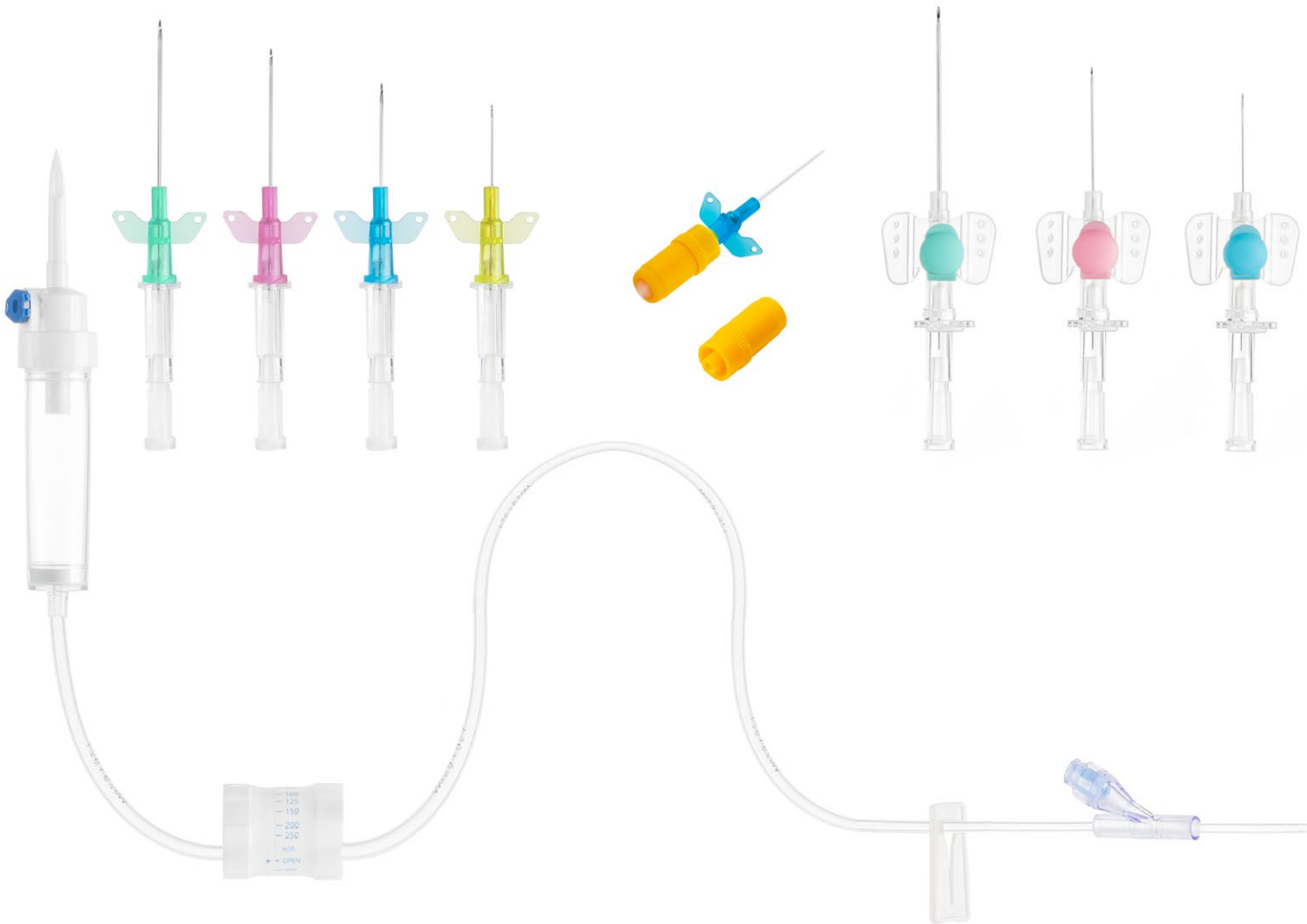
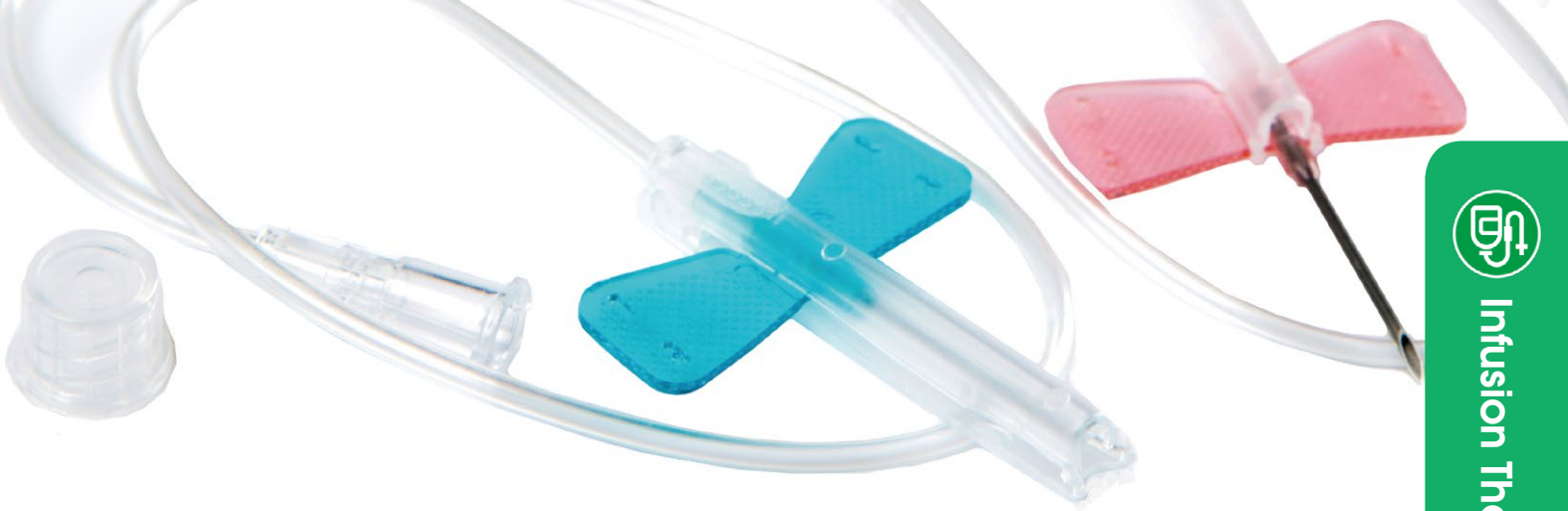


Infusion Therapy





Safety Scalp Vein Set

It is used for injection of vein for medication infusion, the safety mechanism help to eliminate accidental needlestick injuries.

Feature :

- The ergonomic design is ideal for clinician handling and patient comfort.
- Offering an easy grip.
- The design to minimize slips and touch contamination.

Safety scalp vein set



Connectors



Scalp vein set



Safety scalp vein set

Code	Gauge	Size and length	Color
SSVS27/SVS27	27G×5/8"-3/4"	0.4×16-19mm	Grey
SSVS26/SVS26	26G×5/8"-3/4"	0.45×16-19mm	Brown
SSVS25/SVS25	25G×5/8"-3/4"	0.5×16-20mm	Orange
SSVS24/SVS24	24G×5/8"-3/4"	0.55×16-20mm	Purple
SSVS23/SVS23	23G×5/8"-3/4"	0.6×19-25mm	Blue
SSVS22/SVS22	22G×5/8"-3/4"	0.7×25mm	Black
SSVS21/SVS21	21G×5/8"-3/4"	0.8×28mm	Green
SSVS20/SVS20	20G×5/8"-3/4"	0.9×28mm	Yellow
SSVS19/SVS19	19G×5/8"-3/4"	1.1×28mm	Cream
SSVS18/SVS18	18G×5/8"-3/4"	1.2×28mm	Pink



Infusion Set

Delivering solutions in IV therapy for improved patient care.

Features:

- Sharp spike is easy to puncture.
- The ISO standard spike can fit with any infusion bottles and bags.
- Soft and transparent chamber is easy to press and adjust solution.
- Antibacterial air-inlet.



IVS05

- Big chamber with air vent, filter, needleless Y site, Adelberg flow regulator, 1.8m tube, luer lock with cap.



IVS01

- Big amber-colored drip chamber with air vent, ABS Adelberg flow regulator, amber-colored tube 1.5m, luer lock with needle.



IVS02

- Small drip chamber with air vent, Y site, 1.5m tube, luer slip without needle.



IVS03

- Winged spike, medium drip chamber with air vent, 10drops, filter, ABS Adelberg flow regulator, Y injection port, 1.8m tube, luer lock without needle.



IVS04

- Medium drip chamber without air vent, 60 drops, filter, Y injection port, 1.8m tube, luer slip without needle.

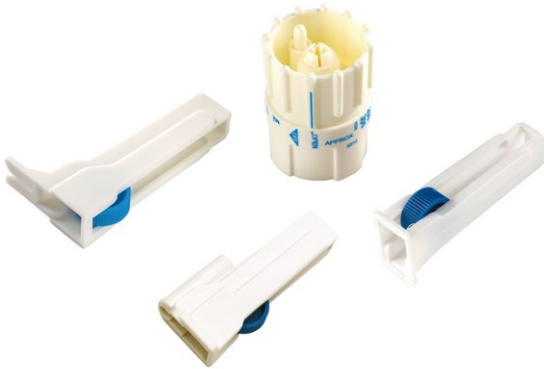


Infusion Set

We offer a wide variety of IV accessories to meet the needs of current practice:

Spike with drip chambers

- With/without air vent.
- 10drops, 20drops, 60 drops/ml.
- With filter or without filter.
- 50mm/54mm/62mm drip chamber



Flow regulators

- Small flow regulator, Medium flow regulator, ABS Adelberg flow regulator, Protective flow regulator, Accurate flow regulator rate of 5mL/hr to a maximum of 300mL/hr.



Injection ports

- Latex/Latex free straight tube, Injection bulb



Transfer sets



Y injection ports

- Needleless Y injection port, Latex/Latex free Y injection port



Connectors

- Luer slip, Luer lock. Rotating luer lock connector Connector cap , Vented cap

- PVC tube length from 1.3m to 2.2m or any required length.
- PVC DEHP FREE, TOTM, Non-PVC tube material available
- Customized mold construction for any kind of components.



IV Burette

Delivering solutions in IV therapy for improved patient care.

Features :

- Soft and transparent chamber for easy to read graduated scale.
- Floating valve for easy fluid level indication and auto shut-off to resist the air bulb to the vein.
- Integral 15 micron air-guard filter to prevent air introduction.
- 60drops/ml.
- Gravity use.



IVB150-2



latex /latex free valve



Needle-free injection site



Air vented spike

Description	code
Soft chamber 100ml, with air vent, latex tube, tube 1.5m, luer lock with needle.	IVB 100-1
Hard chamber 100ml, with air vent, latex bulb, luer slip with needle	IVBH 100
Soft chamber 110ml, with air vent, with latex shut-off valve, Y injection port, tube 1.8m, luer lock with needle	IVB 110-1
Soft chamber 150ml, with air vent, with latex shut-off valve, Diameter 5.6mm tube to comply with the infusion spike.	IVB 150-1
Soft chamber 150ml, with air vent, with plastic shut-off valve, needleless Y injection port, tube 2.2m, luer lock without needle.	IVB 150-2

IV Cannula

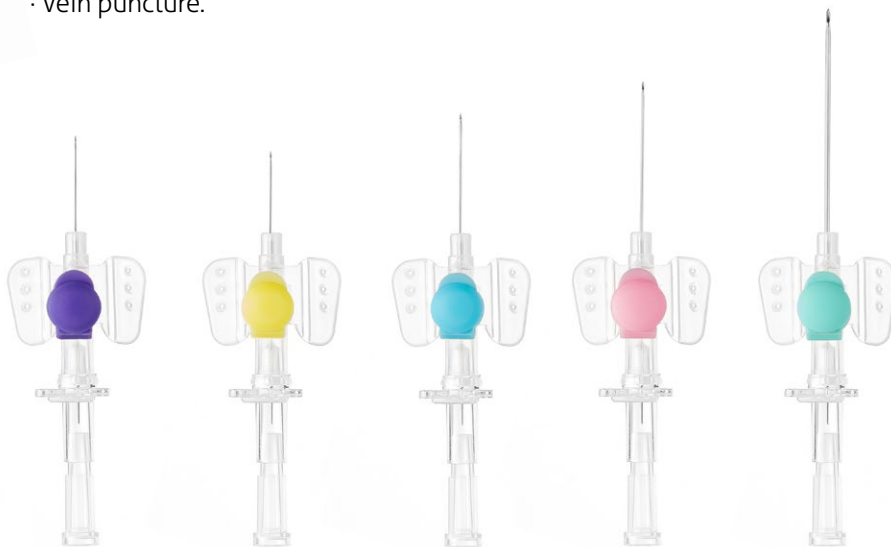
Delivering solutions in IV therapy for a short term period.

Features:

- Color-coded casing gives allows for easier identification of catheter size.
- Translucent catheter hub and flashback chamber allows for easy detection of blood.
- Flash back at vein insertion.
- Teflon radio-opaque catheter.
- Precision finished pet or PU catheter assures stable flow and eliminates catheter tip kink.
- The sharp needle features a universal bevel geometry that allows a wider choice of insertion angles.
- Can be connected to syringe by removing filter cap to expose luer taper end.
- Use of hydrophobic membrane filter eliminates blood leakage.
- Close and smooth contact between catheter tip and inner needle enables safe and smooth.
- Vein puncture.



Wing type



Injection type



Pencil type

Code		Gauge	Size and length	Color	
Pencil type	Wing type	Injection type			
IVCP14	IVCW14	IVCI14	14G	2"	Orange
IVCP16	IVCW16	IVCI16	16G	2", 2 1/2"	Grey
IVCP18	IVCW18	IVCI18	18G	1 1/4", 1 1/2", 2"	Green
IVCP20	IVCW20	IVCI20	20G	1 1/4", 2"	Pink
IVCP22	IVCW22	IVCI22	22G	1"	Blue
IVCP24	IVCW24	IVCI24	24G	3/4"	Yellow



Safety IV Cannula

Features :

- Safety design can reduce needle stick Injuries.
- Result in less blood exposure to staff than catheters featuring spring-retraction of the needle.
- Promote first Stick Success.
- The safety design ensures that the safety mechanism is always activated and prevents re-insertion of the stylet.
- No extra steps are required to ensure healthcare worker and patient safety.
- With this easy-to-use safety IV catheter, you can be confident of successful needle and catheter placement every time.
- PVC-Free, DEHP-Free and Latex-Free.
- Close system and open system available.



Type 1

Autoguard Type



Type 2

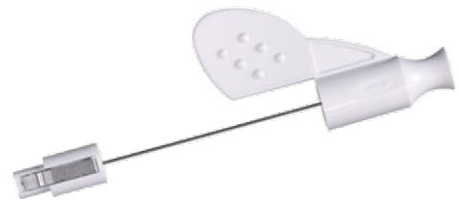
Sliding Pull Rod Type

Gauge	Catheter Length (mm)	Color	Code	
			type1	type 2
24G	19	Yellow	IVCS1-24	IVCS2-24
22G	25	Blue	IVCS1-22	IVCS2-22
20G	32	Pink	IVCS1-20	IVCS2-20
18G	32	Green	IVCS1-18	IVCS2-18
17G	45	White	IVCS1-17	IVCS2-17
16G	45	Grey	IVCS1-16	IVCS2-16
14G	45	Orange	IVCS1-14	IVCS2-14



Safety Closed IV Catheter System

- Passive safety and blood control technology to protect against needlesticks and blood exposure

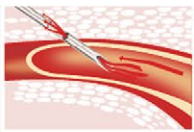


Needle free positive pressure connector
High pressure resistance

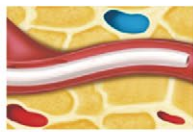
Bonded extension set reduces the risk of contamination from repeated disconnections and reconnections



Radiopaque catheter features flashback "window" for quick visualization of blood



Side hole for quick flashback



PU Biomater Catheter



High pressure resistance

Gauge	Catheter Length (mm)	Color	Code
26G	15	Purple	IVCS3-26
24G	19	Yellow	IVCS3-24
22G	25	Blue	IVCS3-22
20G	32	Pink	IVCS3-20
18G	32	Green	IVCS3-18
17G	45	White	IVCS3-17
16G	45	Grey	IVCS3-16
14G	45	Orange	IVCS3-14



Infusion Therapy

Sterile IV Start Kit

Description:

- 2ea Gauze sponges, 2x2"8ply.
- 1ea Label with four lines (optional).
- 1ea Tourniquet 3/4x18 synthetic.
- 1ea IV dressing film 6x7cm.
- 1ea PE tape, 3/4x18".
- 1ea Prep. appl 2% chg, 1,5ml (optional).
- Customization types are possible.



IVK01



Extension Tube

Features :

- Our extension sets are available in various lengths and dimensions to accommodate various applications.
- A range of lengths that provide flexibility in a variety of clinical settings.
- Available with various needleless connector options.
- A range of various flow clammer, components, connector options.
- To prevent dislodgment of IV catheter and offers ease of use during connection.
- Components are available for DEHP free or latex free.



Description	Code
Needleless type, 1way, female luer lock, male rotating luer lock, slide clamp,OD 4mm	ET01
Needleless type, 2way, female luer lock, male rotating luer lock, slide clamp,OD 4mm	ET02
Needleless type, 3way, female luer lock, male rotating luer lock, slide clamp,OD 4mm	ET03
Needleless type, 4way, female luer lock, male rotating luer lock, slide clamp,OD 4mm	ET04
Male and female luer lock	ET05
T connector, male and female luer lock, slide clamp	ET06
3way stopcock, male rotating luer lock	ET07
Needleless type, 1way, female luer lock, male rotating luer lock, slide clamp,OD 2.35mm	ET08
Needleless type, 2way, female luer lock, male rotating luer lock, slide clamp,OD 2.35mm	ET09
Needleless type, 3way, female luer lock, male rotating luer lock, slide clamp,OD 2.35mm	ET10
Needleless type, accurate filter 0.2µm/1.2µm, clamp, needless Y site, luer lock with cap, OD 4mm.	ET11

Three Way Stopcock

Maximize fluid flow control and fluid and drug delivery efficiency.

Features:

- We can offer a full range of stopcocks to assist you in controlling fluid flow through IV delivery systems.
- Single packaged, as various options to meet all of your IV therapy needs.
- All options are liquid resistant with a transparent housing for clear view of the fluid path.



TWS01



TWS03



TWS02



TWS04



TWS05



TWS06